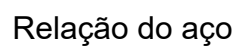
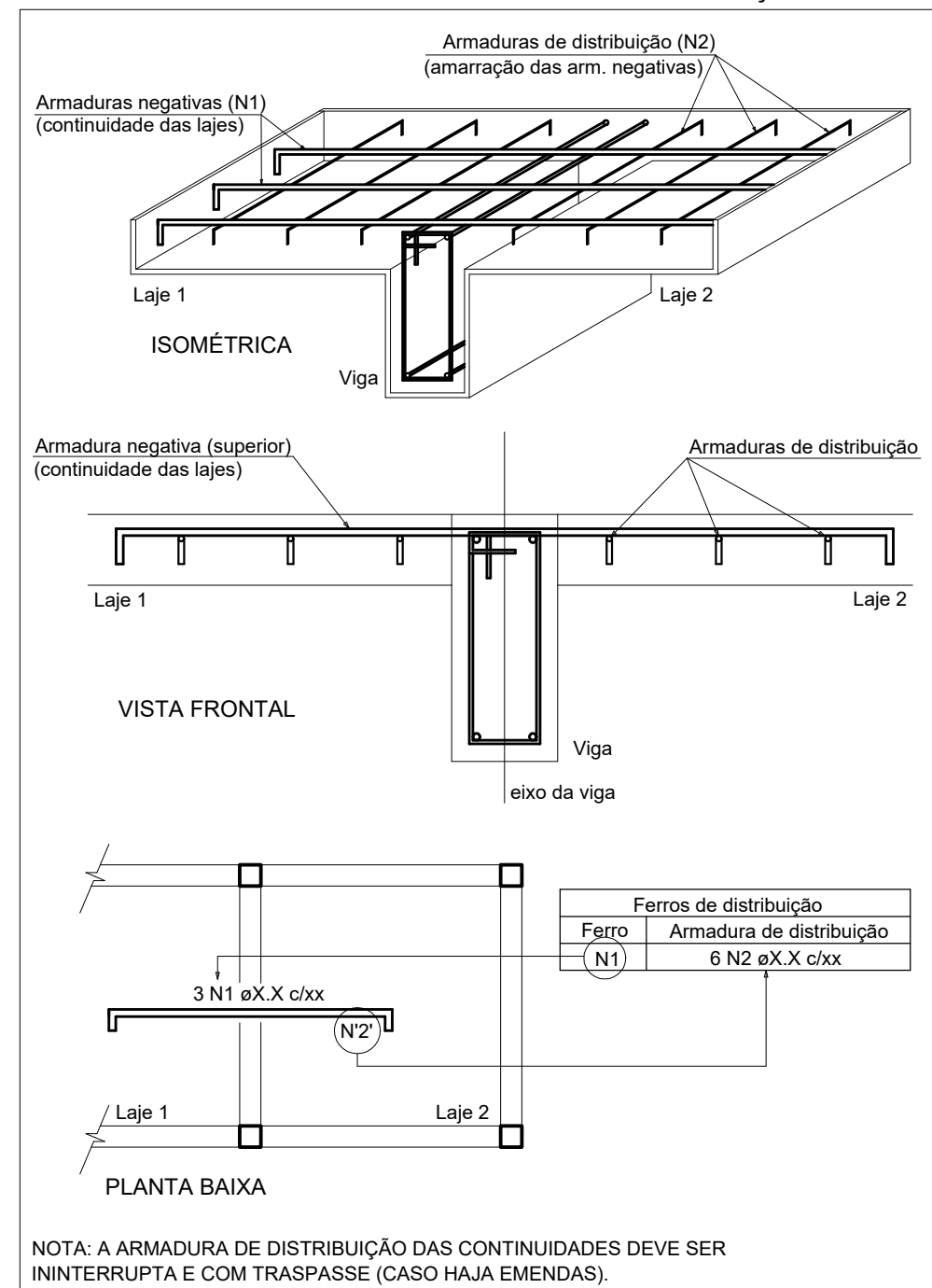
Relação do aço

## Resumo do aço

Volume de concreto (C-30) = 0.47 m<sup>3</sup>  
Área de forma = 5.42 m<sup>2</sup>



## Resumo do aço

AÇO	DIAM (mm)	C.TOTAL (m)	PESO (kg)
CA50	8.0	4.4	1.7
	10.0	31.7	19.5
PESO TOTAL (kg)			
CA50	21.3		

